

# How To: Capture XMLA interaction using TCPTrace



How-To #:	10110216
Last Revised:	2010-11-26
Product(s):	All versions of Simba02X. Screenshots below are taken with Simba02X v4.3.6.12 and TCPTrace v0.8.1.
Client Application(s):	All
Client Platform(s):	All (Windows)
XMLA Source:	Any XMLA data source
XMLA Platform(s):	Any platform

## Overview

TCPTrace is a useful tool to capture the XMLA data stream between Simba02X and your XMLA server. This article uses MSAS as a reference. You can configure TCPTrace to capture Simba02X interaction with any XMLA data source.

## How to Setup TCPTrace

You can download TCPTrace from: <http://www.pocketsoap.com/tcptrace/>.

You do not need to install TCPTrace, all you need to do is extract the contents of the zipped file and run the TCPTrace executable on the client machine.

## How to Configure TCPTrace

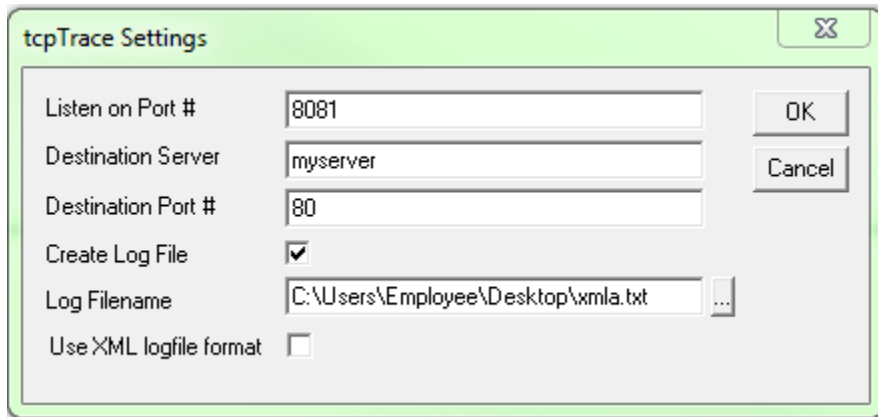
You will be prompted for the following information:

- **Listen on Port #:** local port to listen on.
- **Destination Server:** The IP address or the name of your XMLA server.
- **Destination Port #:** This is the port of your XMLA server.

If you normally connect to your XMLA server with the following URL:

<http://myserver:80/olap/msmdpump.dll>

Then you would configure TCPTrace as shown in the screenshot below:



Mark the **Create Log File** checkbox to save the request/response packets into a file. TCPTrace will group all the request and response packets together. Within the log file, you can search for the string “*Client Data*” to find all the XMLA requests from SimbaO2X. You can find the XMLA server responses by searching for “*Server Data*”.

**Note:** The trace log file will be saved when you stopped the trace.

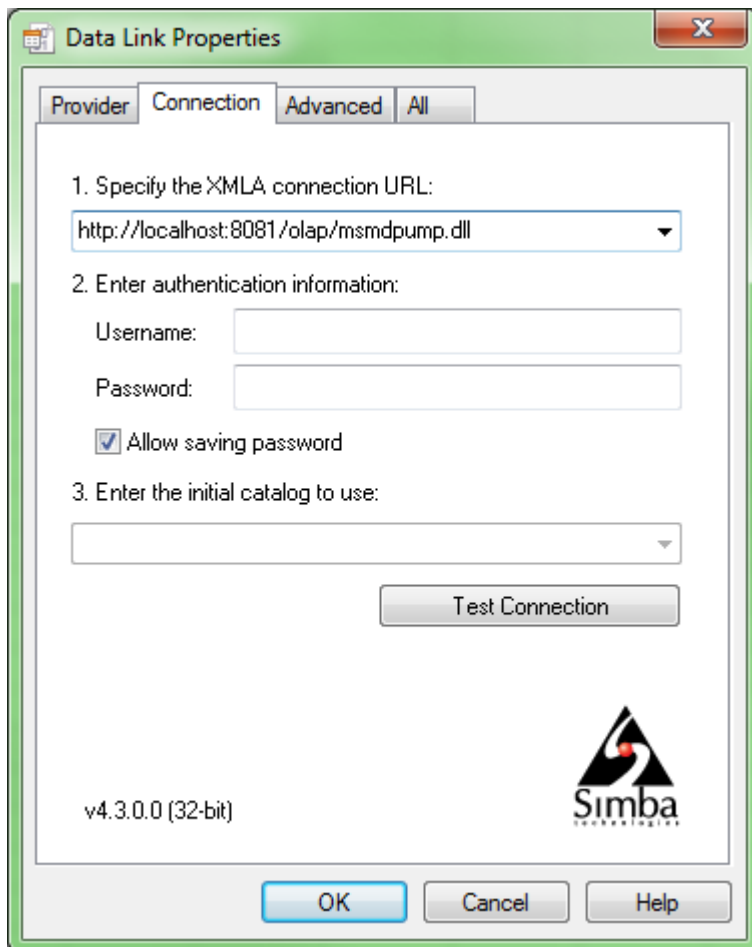
Click **OK** to start TCPTrace. TCPTrace will now listen on *localhost:8081* and act as a proxy between SimbaO2X and your XMLA server.

## How to Use TCPTrace with SimbaO2X

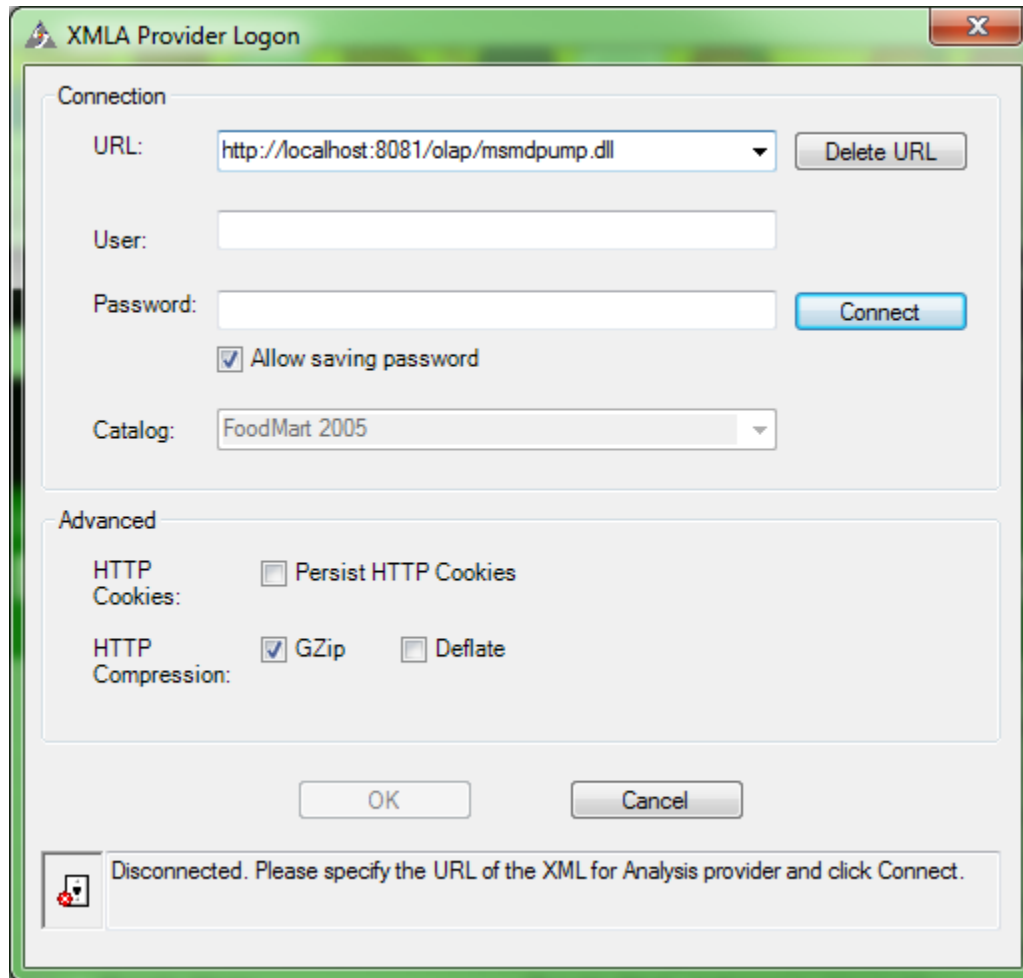
You have configured TCPTrace on your client machine, and started the trace. From your client application, i.e. Excel, you will now enter the following URL for your data source:

<http://localhost:8081/olap/msmdpump.dll>

The screenshot below shows the connection URL being used with SimbaO2X Provider in Excel Data Link Properties pages.



The screenshot below shows the connection URL being used with SimbaO2X Provider in the XMLA Provider Logon dialog.



You can proceed with SimbaO2X as usual. The interaction between SimbaO2X and your XMLA server will be captured in TCPTrace.

## How to Stop TCPTrace

Go to **File > Stop Trace** to stop your TCPTrace. TCPTrace will stop listening on the selected port. If you had selected **Create Log File** initially, the log file will be saved at this point.